

## Appendix 2

### Report to Chipperfield Advisory Committee for activity over 2021–23

July 2023



The Renaissance Room, installation view, February 2022, image: Joe Low

### 1. Summary

In the early part of 2021, the Gallery remained closed as part of the pandemic lockdown measures and re-opened in May with *Creating a National Collection* (28 May – 4 Sept 2021) – the result of a major partnership with the National Gallery (NG) stemming from the Art Fund/NG Curatorial Traineeship scheme (secured in 2019). This saw collaboration in many areas and the pairing of 9 loans from the NG alongside paintings from Southampton’s collection. The exhibition provided the focal point for the formal launch for Southampton’s bid to become UK City of Culture in 2025, in which the Art Gallery was a major feature both in terms of programme and planned legacy.

With the Gallery back open to the public the exhibition programme has continued with a number of other collaborations, including co-curated exhibitions with both Universities and a series of exhibitions responding to the climate crisis working alongside the Council’s Green City team and Hampshire and Isle of Wight Wildlife Trust. Meanwhile, the collection continues to grow with a number of significant gifts received in the last year and two Contemporary Art Society-funded acquisitions of work by Phoebe Collings-James and Rachel Jones. The loans programme has returned to pre-pandemic levels, with numerous paintings travelling nationally and internationally. In 2022 the Gallery received a large gift of funds from the Dannatt Trust specifically for conservation of modern British art in the collection, which builds on previous significant investment by the Trust.

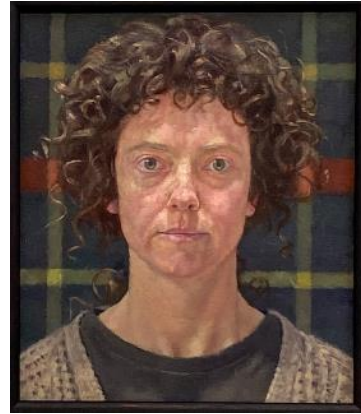
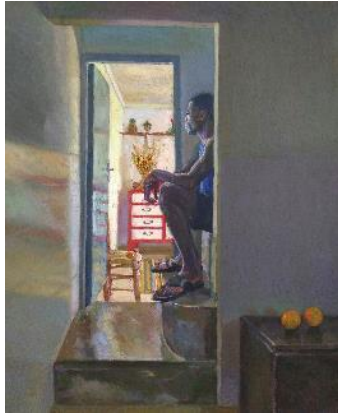
In March 2022 the team was bolstered by the appointment of an Assistant Curator and Assistant Conservator focused on growing the ArtLease scheme to support income generation and improve access. In addition to this, the service has worked closely with a retail consultant to improve the retail offer and develop new products, with a particular focus on the Art Gallery.

A major refurbishment of the Art Gallery has commenced with the replacement of the Copper roof over the Main Hall completed in 2022. Following receipt of £2.23m from the DCMS MENDS fund in March 2023 (the largest single award in the South), the next phases will continue, with a series of works planned for 2024-25 including replacement of West Wing skylights, roofing and environmental plant and redecoration of the Main Hall, installation of double glazing and a new entrance shutter.

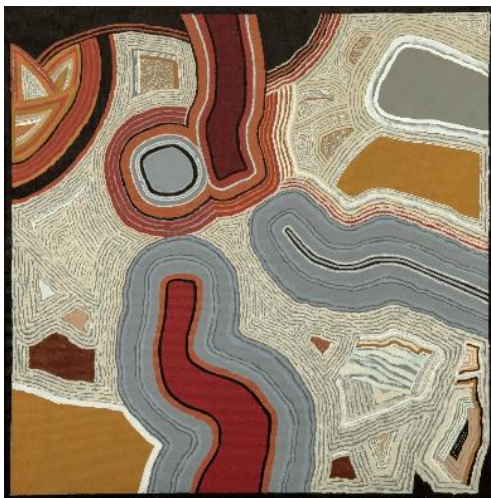
Visitor numbers overall are recovering since the pandemic from 48,879 in 2019–20; 28,568 in 2021–22 to 43,166 in 2022–23 (figures include learning visitor numbers).

## 2.New Acquisitions

From January 2021, the Gallery accepted a number of significant gifts to the collection, which are listed below. Notably, the gift of works by John Hitchens (see image at base of page) and his grandfather, Alfred, and subsequently his son, Simon. Southampton is now the first public art collection to hold works by four generations of the Hitchens family (with the Gallery already holding a number of paintings by his father, Ivon). Through the Contemporary Art Society the Gallery has also acquired works by Phoebe Collings-James and Rachel Jones.



- Nahem Shoa, *Gbenga sitting on the stairs*, 2002, oil on canvas; gifted by the artist (**above, left** © The Artist)
- Louise Courtneil, *A Mirror's Secret, Self-Portrait*, 1998, Oil on canvas; gifted by the artist (Image **above right** © The Artist)
- Three works on paper by Nerys Johnson; gifted by the Trustees of the Nerys Johnson Estate
- Three works on paper by Barbara Rae; bequeathed in April 2021 by Bernard Heine with Art Fund support
- Christopher Le Brun, *D19*, 2018, oil on paper; gifted by the artist on the occasion of his 70th-birthday in 2022
- Lisa Milroy, *Skirt*, 1984, oil on canvas (**below right** © The Artist); Donated by Lynne Cooke
- John Hitchens, *Land Quest*, 2017, acrylic on canvas (**below left** © The Artist); gifted by the artist, together with a pastel landscape by his grandfather, Alfred Hitchens.



## SOUTHAMPTON CITY ART GALLERY

- Simon Hitchens, *06.16-20.08/15.4.20/ST252148*, 2020, drawing on paper; gifted by the artist.
- Rachel Jones, *say cheeeese*, 2022, oil stick, oil pastel on canvas; Presented by the Contemporary Art Society with the support of the Chipperfield Bequest Fund, 2022/23.
- Kurt Jackson, *Three thousand species of fungi in the New Forest*, 2017, mixed media on linen; gifted by the Jackson Foundation, image **below right** © The Artist.
- Phoebe Collings-James, *Jugular*, 2021, glazed ceramic; Presented by the Contemporary Art Society through the Omega Fund, 2023 (image **below left** © Phoebe Collings-James. Courtesy: The Artist and Arcadia Missa, London. Photo Credit: Luke Walker).



### 3.Loans Out Programme

The Gallery has maintained a busy loans programme both nationally and internationally, lending 95 works of art to 46 venues since 2021. Currently there are works out on loan to Musée du Louvre-Lens, Falmouth Art Gallery, Stanley Spencer Gallery, Fondation de L'Hermitage, Lausanne and Pallant House.

Highlights from the loans programme include:

- *Two Poodles* by Pierre Bonnard to Cleveland Museum (27 June – 19 September 2021) and Portland Art Museum, Oregon (24 October 2021 – 23 January 2022) for *Private Lives: Home and Family in the Art of the Nabi* (Pierre Bonnard, Edouard Vuillard, Maurice Denis, Félix Vallotton)
- *Bananas* by Lucian Freud to Victoria Art Gallery, Bath (10 July – 19 September 2021) and Falmouth Art Gallery (25 September – 27 November 2021) for *Freud, Minton and Ryan – Unholy Trinity*
- *Avenue of Chestnut Trees* by Alfred Sisley to Kunstmuseum, Basel (4 September – 23 January 2022), and the Ashmolean Museum (17 February – 12 June 2022) for *Camille Pissarro: The Studio of Modernism*
- *The Artist's Sister in the Garb of a Nun* by Sofonisba Anguissola to Wadsworth Atheneum Museum of Art (30 September 2021 – 9 January 2022) and Detroit Institute of Arts (6 February – 29 May 2022) for *By Her Hand: Artemisia Gentileschi and Women Artists in Italy, 1500–1800*
- *Red Movement* by Bridget Riley to The Lightbox, Woking (18 December 2021 – 10 April 2022) for *Bridget Riley: Pleasure of Sight*
- *Jean and Still Life in Front of a Window* by John Bratby and *Relief Construction* by Anthony Hill to The Barbican Centre (3 March – 26 June 2022) for *Postwar Modern: New Art in Britain, 1945–65*



## SOUTHAMPTON CITY ART GALLERY

- *Glacier Vortex* by Wilhemina Barnas-Graham and *Factory Roof* by Carol Rhodes, to Royal West of England Academy, Bristol (9 July – 11 September 2022) for *Earth: Digging Deep in British Art 1715–2022*
- *The Mantelpiece*, *A Red Sky at Night* and *The Juvenile Lead* by Walter Sickert, to Tate Britain (25 April– 18 September 2022) and Petit Palais, Paris (14 October 2022 – 29 January 2023)
- *Bananas* by Lucien Freud to The Garden Museum, London (14 October 2022 – 5 March 2023) for *Lucian Freud: Plant Portraits*
- *The Artist's Sister in the Garb of a Nun* by Sofonisba Anguissola to the Rijksmuseum Twenthe, Holland (12 February 2023 – 11 June 2023) for *Sofonisba Anguissola: Portraitist of the Renaissance*

Regionally, multiple works were loaned to four exhibitions:

- St Barbe Museum & Art Gallery, Lymington (11 September 2021 – 8 January 2022) for *Haunted Landscapes – The Art of the Eerie*
- Russell Cotes Museum and Art Gallery, Bournemouth (1 October 2021 – 6 March 2022), for *A Mirror of the Times: 100 years of British Art through Bournemouth Arts Club*
- Russell Cotes Museum and Art Gallery, Bournemouth (5 October 2022 – 5 March 2023), *Telling Tales: The Story of Narrative Art*
- John Hansard Gallery (27 Nov 2021 – 26 Feb 2022) for *Derek Jarman, Modern Nature*

### ArtLease Scheme

With the appointment of two new Assistant posts (curatorial and conservation), we have renewed focus on the ArtLease Scheme and have sent paintings to three new venues over the past year (2 Audley Retirement Home venues and a hotel) bringing the total to 149 paintings across 12 venues.

A further 15 paintings are due to go to new venue Audley, Scarcroft, in Autumn this year, capitalising on the existing relationship we have with Audley Retirement Homes.



ArtLease paintings on display at one of the Audley properties © Audley Group

SOUTHAMPTON  
CITY ART GALLERY



*Portrait of Arthur Jeffress* by Graham Sutherland (centre), with *Napoleon* by François Gérard (left) and Richard Deacon, *Mirror Mirror* (right). Main Hall, June 2022, image: Joe Low



*A Shared Love of Landscape* (12 November 2022–4 March 2023) brought together works by four generations of the Hitchens family, including this sculpture, *Dark Shadow Falling* (2021), by Simon Hitchens © The Artist

#### 4.Conservation

The busy schedule of ongoing activity preparing paintings for display and loan, and associated condition reporting has been greatly alleviated by the appointment of an Assistant Conservator as part of ArtLease. In addition to this, there have been a number of conservation projects over this period which have been completed or are ongoing.

##### Fundraising

- The Dannatt Trust approached the Gallery to make a gift of £94,243, specifically for conservation of modern British art in the collection. The funding will be held in trust by the Friends of Southampton Museums and Galleries (FOSMAG). A strategy has been agreed for the use of the funds, which includes depositing a set amount in an interest-earning account.
- Conservator Rebecca Moisan secured £250 from *Arts Society Hampshire & Isle of Wight* and £250 from *Central Arts Society* towards the production of a new frame for Mark Gertler's *Rabbi and Grandchild*.

##### Frame Conservation

- The frame for *Claude Monet's The Church at Vétheuil* which had been sent for conservation in October 2020 was displayed in its conserved state for the first time in the *Creating A National Collection* exhibition (28 May – 4 Sept 2021) alongside another Monet from the National Gallery, *The Petit Bras of the Seine at Argenteuil*.



Both Monet's on display in *Creating a National Collection*, 2021

- The conservation of the frame for John Singer Sargent's *The Late Major E.C. Harrison as a Boy* is almost complete. It was delivered back to the Gallery, before going out on loan to National Gallery of Art, Washington DC (2 October 2022 – 2 January 2023), for the exhibition *Sargent in Spain*, which travelled on to the Legion of Honor, Fine Arts Museums of San Francisco (11 February – 14 May 2023).
- Following conversations with artist David Redfern, the Gallery is collaborating with him to produce a new frame for his 1977 painting *Work*, which is currently housed in an acrylic box. This will greatly enhance the appearance of the work.
- Dannatt funding has supported the creation of new frames for Mark Gertler's *Rabbi and Grandchild* and Paul Nash's *Landscape of the Malvern Distance*.



## SOUTHAMPTON CITY ART GALLERY

- Former Conservator (now volunteer) Ambrose Scott-Moncrieff has been working with a conservation intern on conserving John Bellamy's *Bethel*, including the fabrication of new backing for one of the panels. The internship was supported by Dannatt Trust funding.

### Research

- In May 2021, Ian Tyers carried out dendrochronology on Jacob Jordaens's *The Holy Family for Royal Museums of Fine Arts in Brussels* as part of an international art history project carrying out research on Jordaens and Van Dyck's oil on panels.

### Sculpture storage improvements

- The storage improvements funded by the Gabo Trust are now complete, with the sculptures fitted in their new crates and relocated in the store.

### Ongoing collaboration with National Gallery

- Assistant Conservator Ben Hall undertook a placement with the National Gallery's conservation department over 2022–23. Working under the supervision of NG Conservators, he worked on two paintings from the collection: *An Extensive Landscape* by Philips Koninck (**below**) and *A Mountain Landscape* by Salvator Rosa. This has helped to grow the Gallery's conservation expertise and builds on the long-standing partnership with the National Gallery. Both newly conserved paintings will be put on display in the Main Hall in 2023.



*An Extensive Landscape* by Philips Koninck

## 5. Exhibitions: 2021–23

Despite the vagaries of the pandemic, the work on exhibitions did not abate. Having adapted and developed online exhibitions for the first time during the pandemic, the Gallery's first in-person exhibition was the culmination of the two-year partnership with the Art Fund and the National Gallery's Curatorial Traineeship programme. The exhibition, opening in May 2021, was timed to be part of the official launch of Southampton's bid to become UK City of Culture in 2025. Director of the National Gallery, Dr Gabrieli Finaldi was a key speaker alongside political leaders, the City of Culture Bid Director and Head of Culture & Tourism. All exhibitions have been accompanied by a comprehensive learning and events programme for families, adults and school age children including experimenting with online provision.



Installation view of *Creating a National Collection*, 2021, image: Joe Low

### ***Creating a National Collection: The Partnership between Southampton City Art Gallery and the National Gallery***

*28 May – 4 Sept 2021*

A major collaboration exploring the unique relationship between Southampton City Art Gallery and the National Gallery, which advised Southampton on acquisitions into the collection until 1975. At the heart of the exhibition were key pairings of work from the two collections across the history of Western Art, including paintings by Monet, Gainsborough and Cesare de Sesto. The exhibition was accompanied by a 176-page publication and was co-curated by Curatorial Trainee, Jemma Craig, alongside Dr Susanna Avery-Quash, Senior Research Curator (History of Collecting) as part of the National Gallery's curatorial trainee programme.





Installation view of *Manifesting the Unseen*, showing *Siraat*, 2021, by Sara Choudhrey © The Artist, image: Joe Low

### ***Manifesting the Unseen***

28 May – 9 October 2021

An exhibition in partnership with Solent Showcase and Manifesting The Unseen, a London-based artist's collective of Muslim women sharing an interest in the unifying principals of Islamic art. As part of the pandemic-impacted Southampton Mayflower 400 programme, their intention was to invite the viewer to see the unseen, challenging the perceptions of Islam and Muslim women.

### ***A Complete Portrait of Arthur Jeffress***

24 September 2021 – 22 January 2022

Curated by Gill Hedley, an exhibition about the life and collection of Jeffress, to coincide with a major biography written by Hedley. Jeffress bequeathed a significant part of his collection to Southampton after his tragic death by suicide in 1961. The exhibition included three loans from Tate bequeathed to them by Jeffress, reuniting them for the first time with the paintings bequeathed to Southampton.

### ***New Acquisitions 2011–21: Narrative, Figure and Place***

24 September 2021 – 29 January 2022

2021 marked 110 years since Southampton City Art Gallery's visionary founding bequest from Councillor Robert Chipperfield. This exhibition followed on from *Creating a National Collection* which focussed on the Gallery's establishment in the twentieth century as a holder of one of the finest regional art collections in the UK. The exhibition brought together a selection of 60 works acquired by Southampton City Art Gallery since 2011, featuring painting, photography, drawing, print, sculpture, video, new media and textiles.

### ***Lessons Learned***

23 October 2021 – 15 January 2022

Students, Alumni, Honorary Doctors, Fellows and friends of the Southampton School of Art, Design and Fashion, Solent University were invited to select pieces from the collection that had inspired or influenced them. Course teams from the School chose their selections as teaching aids to inform and support delivery of the curriculum to the Undergraduate and Postgraduate students.

## SOUTHAMPTON CITY ART GALLERY

### ***Royals to Ratcatchers: 200 years of Power in British Portraiture***

*From 22 January – 28 May 2022*

Curated by undergraduate History students from the University of Southampton, the exhibition explored the hierarchies underpinning self-presentation throughout two centuries of art history – from Joshua Reynolds' gentry to Josef Herman's miners. The project was integrated into a History module with students working on all aspects of the exhibition development and curation.



Installation view of *There Rolls the Deep*, showing *Altarpiece to the Assumption of CO<sub>2</sub>, 2022*, by Julian Perry © The Artist

### ***Julian Perry, There Rolls the Deep***

*18 February – 4 June 2022*

A series of new paintings by Julian Perry that explored coastal erosion as emblematic of a world in crisis, containing over 30 recent works by Perry as well as studies and found objects from eroding shores. The exhibition included works from the collection that inspired Perry by artists such as J.M.W. Turner, Albrecht Dürer, Gustave Courbet and William Nicholson. The new work was created as a result of Arts Council England funding, which also covered a learning programme that involved coastal visits for local schools.

### ***Earth Art: The Common Ground***

*28 January – 14 May 2022*

Bringing together a selection of the Gallery's important collection of work including sculpture, drawing and photography by key artists of the Land Art movement, including Richard Long, Andy Goldsworthy and Tony Cragg.



Installation view of *Earth Art: The Common Ground*, 2022, image: Joe Low

**Kurt Jackson: Biodiversity**

27 May – 29 October 2022

Works by Jackson made in locations across the UK including the New Forest and south coast, highlighting the amazingly biodiverse world we live in and how this is changing as a result of human activity and climate change.

**Lucy Ash, Invisible Portraits**

30 September 2022 – 14 January 2023

This exhibition highlighted and elevated the voices of the LGBTIQ community through a series of paintings and films by British abstract artist Lucy Ash. Ash created new work in response to the individual lives and stories of LGBTIQ artists represented in the collection, including Duncan Grant, Nina Hamnett, Howard Hodgkin, Maggi Hambling and Derek Jarman. Central to the exhibition were two large community artworks, *Portraits of Inspiration*, created over two years, featuring over 500 portraits of inspiring LGBTIQ people.



Selection of portraits created for *Portraits of Inspiration*, 2022–23

**Lubaina Himid: Lost Cities, Found Objects**



# SOUTHAMPTON CITY ART GALLERY

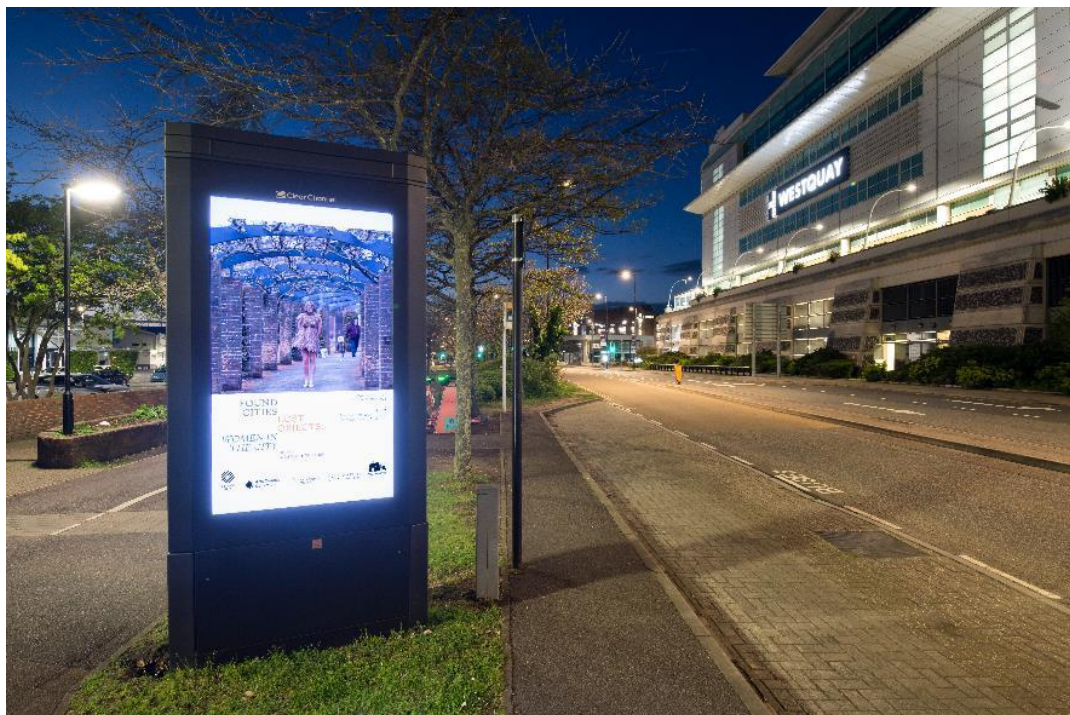
3 February – 6 May 2023

Curated by Turner-Prize winning and internationally renowned artist Lubaina Himid CBE, inviting viewers to consider the experiences of women in the city, as seen through the lens of art. The works in the exhibition were primarily drawn from the Arts Council Collection, supported by Southampton's collection, including Eva Rothschild, Gillian Waring and Alison Turnbull.



*Lost Cities, Found Objects*, 2023, installation view, image: Joe Low

In addition to the exhibition, the Gallery partnered with the Arts Council Collection and 'a space' arts on a city-wide digital billboard commission, inviting female artists to submit artwork inspired by the themes of the exhibition. Three artists were chosen by Lubaina Himid to have their work featured on digital billboards at numerous locations across Southampton, including the City Centre. The three artists were Ellen Gillett, Sarah Filmer and Olana Light. More details on the successful artists can be found [here](#).



Billboard commission, 2023, image: Joe Low

# SOUTHAMPTON CITY ART GALLERY

## **Creative Connections: Southampton**

26 May to 30 September 2023

A project bringing together the collections of the National Portrait Gallery and Southampton's Gallery and Museums to explore and celebrate people whose stories are linked to Southampton. Taking inspiration from these collections, art students from Cantell School in Southampton worked with Hampshire-based artist Pete Codling and the Gallery's Learning team to explore portraiture and discover people associated with the city. The exhibition showcased over 40 loans from the National Portrait Gallery, which were displayed alongside portraits created by the students. Codling created a large-scale drawing called *The Kinship*, inspired by the local story of 4,000 child refugees from the Basque country arriving in Southampton in 1937 during the Spanish Civil War.



*The Kinship* Drawing by Pete Codling (left, © The Artist) displayed opposite self-portraits and portraits of each other by Cantell School students, part of the *Creative Connections: Southampton* exhibition, 2023, Image: Joe Low



## 6. Learning and Engagement

	2021–22	2022–23	2023–24 (to end June 23)
<b>Formal learning</b>	6,717	9,854	3,100
<b>Informal learning</b>	1,974	3,503	1,246
<b>Total</b>	8,691	13,357	4,346

Table of formal and informal learning figures since 2021

Learning and engagement activity has been busy with a strong return to in-person workshops, tours, events and talks. The team maintain a full schools programme during term-time and run activity for families and young people during the holiday periods. The team has also successfully delivered a number of funded projects:

The **Wild Escape Earth Day project** involved working with local schools and communities on a collaborative installation art piece that was installed in the Main Hall on Earth Day (22 April 2023). The team worked with local (walking distance) primary schools to explore the Gallery’s collection of art depicting animals, using it as a catalyst to engage children about habitat and the concept of biodiversity. The work generated at the workshops was brought together to form a largescale installation, using silhouettes cast by the main window as guiding shapes. The subsequent Earth Day event included story-telling, arts and crafts workshops and face painting.

**Creative Connections Southampton**, in partnership with the National Portrait Gallery, involved a school engagement project and major exhibition (see above), involving GCSE art students from Cantell School. The Learning Team worked with project artist, Pete Codling, to deliver a series of drawing workshops with the students to develop their practise and create work for the exhibition. The students were an integral part of the process to develop and curate the exhibition and contributed to the interpretation.



Drawing workshops at Cantell School, 2022–23



## SOUTHAMPTON CITY ART GALLERY

The exhibition has been accompanied by a wide-range of events and activities, including a screening of the film *Guernica Children*, tours of the exhibition by the artist, portrait-inspired drawing workshops and family craft sessions.



Cantell Students with Council Leader, Cllr Satvir Kaur, at the *Creative Connections* launch event, May 2023, Image: Joe Low

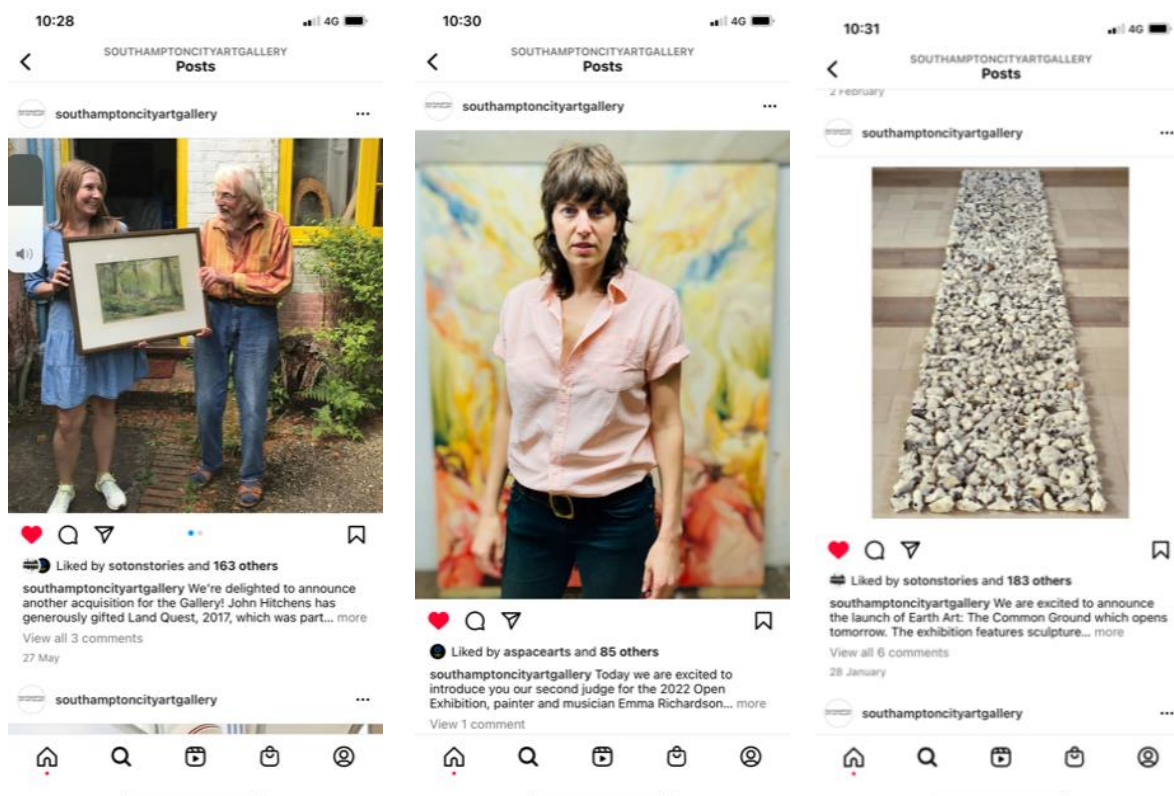
### 7. Digital presence

Although the frequency of the Gallery's social media activity has seen a reduction after the Covid lockdown enabled the team to make it a major focus of engagement activity, the number of followers to the Gallery's accounts continues to rise:

	No of followers in Jan 2021	Current number of followers	% increase
Facebook <a href="https://en-gb.facebook.com/SouthamptonCityArtGallery/">https://en-gb.facebook.com/SouthamptonCityArtGallery/</a>	5,983	7,200	20.3%
Twitter <a href="https://twitter.com/ArtGallerySoton">@ArtGallerySoton</a>	3,680	4,240	15.2%
Instagram <a href="https://www.instagram.com/southamptoncityartgallery">southamptoncityartgallery</a>	2,961	4,339	46.5%

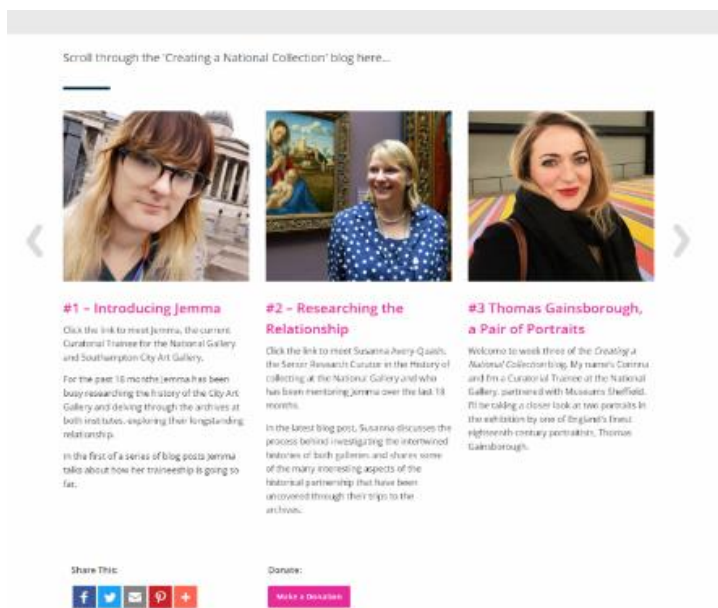
The channels continue to be used for a combination of promoting learning activity, new exhibitions and events such as the Open exhibition. Posts about new acquisitions are especially popular.

# SOUTHAMPTON CITY ART GALLERY



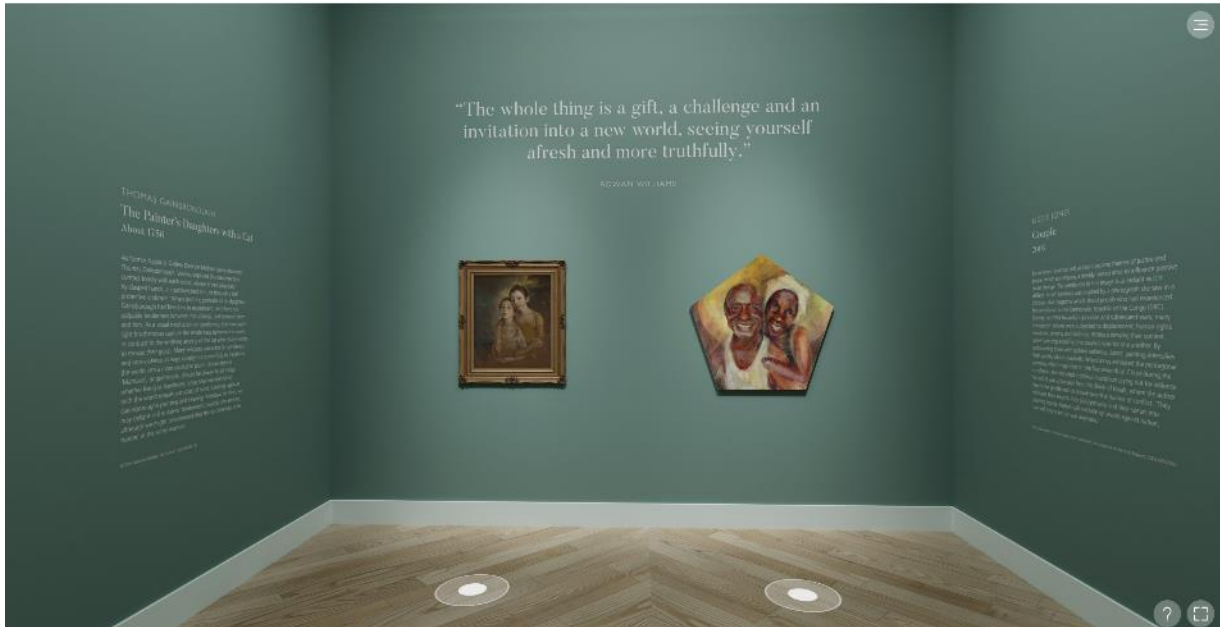
As part of the collaboration with the National Gallery, a number of digital initiatives were developed including a virtual tour of the Gallery with the Curators, Jemma Craig and Susanna Avery-Quash, working with local filmmaker City Eye. The film is available on the Gallery website and can be viewed [here](#).

The team also created a series of blogs that explored different aspects of the National Gallery partnership and went behind the scenes for the creation of the exhibition, all available at the following [link](#).



# SOUTHAMPTON CITY ART GALLERY

In addition to the above, a further collaboration with the National Gallery took place over 2022–23 in the form of the *Fruits of the Spirit: Art from the Heart* project. Nine participating regional partners selected works of art from their own collections to pair with National Gallery works in an online exhibition. Each pairing was chosen to represent one of the 'Fruits of the Spirit', with Southampton pairing *Couple*, 2005, by Lizzie Jones with Thomas Gainsborough's *The Painter's Daughters with a Cat*. The virtual exhibition, created by the National Gallery can be seen [here](#), with a screengrab below:



## 8. Refurbishment and Development Programme

Building on the Council's financial commitment, a multi-phase refurbishment of the Art Gallery roof and other elements over 2022-2025 is underway. Phase one (June-December 2022) saw the replacement of the original Main Hall copper roof.

In September 2022, the Culture & Tourism team applied for a grant of £2.23m from the DCMS Museum Estate and Development (MEND) Fund to support the second phase of works. This was successful and acceptance of the grant was approved at Full Council in February 2023 and will match fund the Council's commitment.

Following a tender process, a main contractor has been appointed and is due to start works in January 2024 with completion in early 2025 subject to any major delays. This phase of work centres on the air handling units, skylights and other internal refurbishment. The team are working through access arrangements with the contractor.

Alongside this, the Art Gallery is a major plank in the *Completing the Cultural Quarter* masterplan as identified in the adopted Cultural Strategy and UK City of Culture bid and its legacy. It is part of a suite of masterplans being developed by the Council in collaboration with key stakeholders across the city under the auspices of a cross-party Renaissance Board chaired by the Leader of the Council.

As part of this work, the Council and Southampton Forward (Culture Trust) have been working with the DCMS-sponsored Impact Investing Institute to identify opportunities for social impact investing in



## SOUTHAMPTON CITY ART GALLERY

Southampton. More recently, Sir Nicholas Serota, Chair of Arts Council England visited Southampton which included a visit to the Gallery, Conservation Studio and collection stores.

In January 2023, Southampton Forward and its founding partners (Southampton City Council, Solent University, University of Southampton, GO! Southampton, Paris Smith, Mayflower Theatre) secured £1.5m investment to deliver key UK City of Culture legacy projects, which will include the Art Gallery and other partners.



New Copper Roof over the Main Hall, Jan 2023